

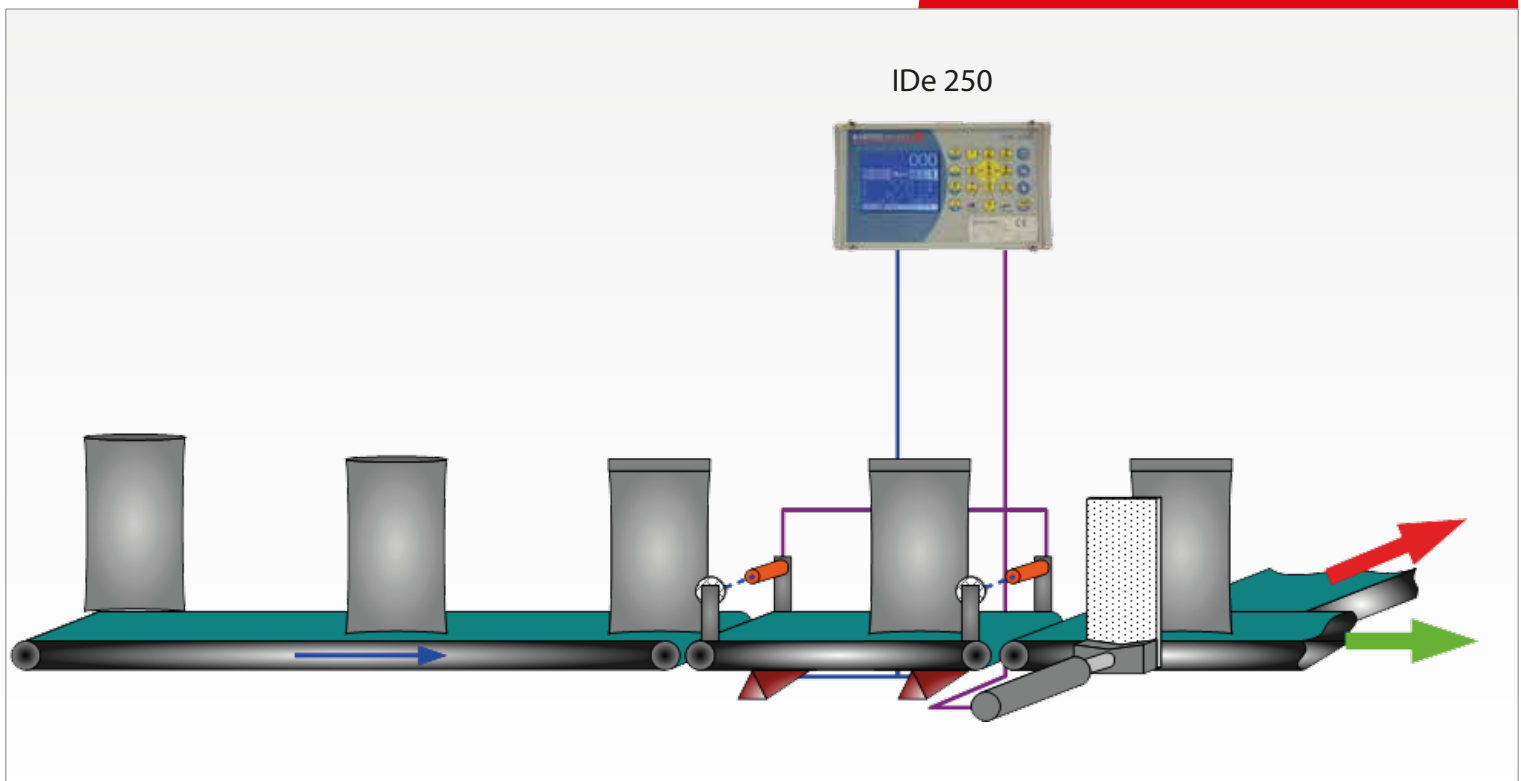
## IDe 250 Software package sorting



### Description

IDe 250 weighing indicators with the Packaging sorting software are used for package and bag sorting stations, etc.

### Example of configuration



## Operation

The IDe 250 weight controller and its sorting software can replace a programmable controller in basic package sorting applications:

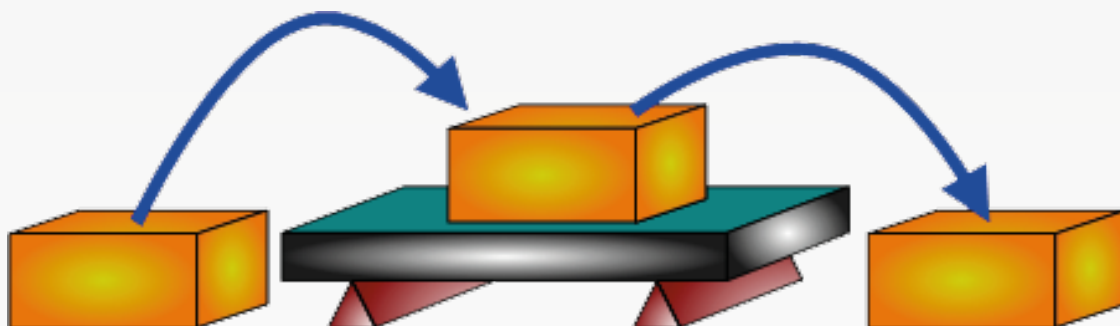
- Inspection of packaging (detection of anomalies, missing items, etc.)
- Inspection of unit weights (min/max weight tolerance)

It can be connected to a management system "PC or PLC" in real time with the MODBUS/JBUS protocol. Or optionally: Ethernet Modbus TCP, field bus (JBUS/MODBUS, MODBUS TCP, PROFIBUS® DP, DEVICE NET®).

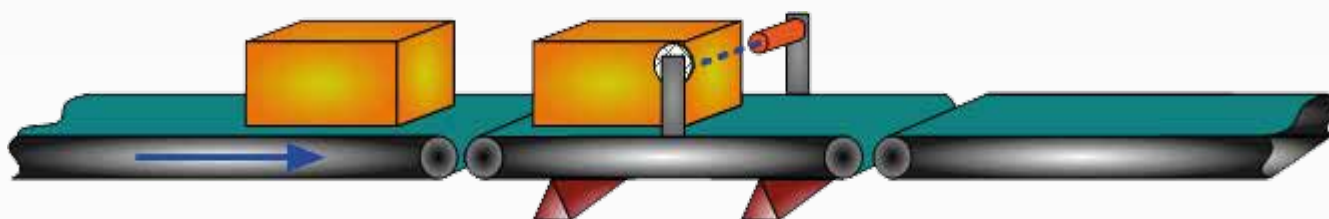
The interconnection with an IDe 250 single-product dosing software application provides a standalone solution for product packaging or/and order preparation.

### 3 possible operating modes:

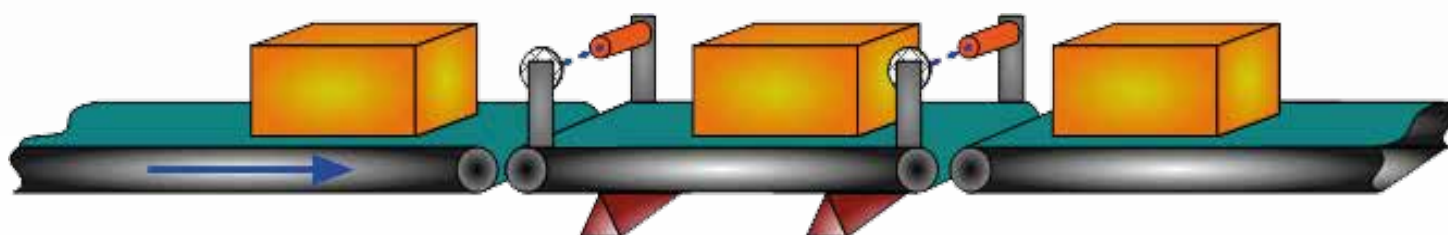
- ▶ Operation without a photocell



- ▶ Operation with 1 photocell



- ▶ Operation with 2 photocells



## Starting a sorting cycle

A cycle may be started directly on the indicator keyboard, or by serial link, fieldbus.

Each sorting cycle may include:

- Batch no. (6 digits)
- Operator no. (6 digits)
- Product no. (6 digits)

## Product file

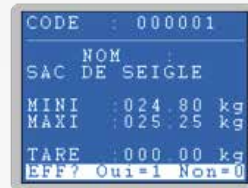
This file may be configured either directly from the front panel of the indicator "using the alphanumeric keyboard or optionally with a PC keyboard", or by the control system "PC/PLC".

It remains resident in the IDe 250 indicator, the memory being saved by a lithium battery.

Capacity: maximum 1,000 products

Call code: 6 digits

- Data:
- Product name .....16 characters
  - Minimum weight of product .....5 digits
  - Maximum weight of product .....5 digits
  - Tare weight of the product (packaging) .....5 digits



FICHER PRODUITS			
24/07/2012	08:28:22		
-----			
000001	SAC DE SEIGLE		
MINI	MAXI	TARE	
24.80 kg	25.25 kg	0.00 kg	
000002	SAC DE BLE		
MINI	MAXI	TARE	
24.90 kg	25.10 kg	0.00 kg	
000003	BAG DE SEIGLE		
MINI	MAXI	TARE	
49.70 kg	50.50 kg	0.00 kg	
000004	BAG DE BLE		
MINI	MAXI	TARE	
49.50 kg	50.20 kg	0.00 kg	

## Data Storage Device file (weighing results)

The DSD file provides access to the last 98,000 weighing operations carried out by the indicator.

Capacity: 98,000

- Data:
- DSD number.....6 digits
  - Weighing date .....10 characters, DD/MM/20YY
  - Weighing time.....8 characters, HH:MM:SS
  - Batch number (Data Field 1) of the weighing cycle.....6 digits
  - Operator number (Data Field 2) of the weighing cycle.....6 digits
  - Product code .....6 digits
  - Tare value.....5 digits
  - Minimum sorting weight.....5 digits
  - Maximum sorting weight.....5 digits
  - Net weight of the weighing operation .....5 digits
  - State of the weighing operation.....1 character, G/+/-

## Weighing ticket

Printouts of current weighing operations during a sorting cycle may be of different types (one only configured):

- No printing of weighing operations during the sorting cycle
- Printing the weighing operations when the weight of the product is correct, OT+ and/or OT- (Output of packages which are OK, OT+, OT-, OK and OT+, OK and OT-)
- Printing the weighing operations when the weight of the product is OT- or OT+ (Output of packages which are OT+ or OT-)
- Printing all weighing operations (Output of packages which are OK, OT+ or OT-)

The statistics printout type desired at the end of the sorting cycle may be configured:

- No printing the statistics at the end of the sorting cycle.
- Printing the statistics when the weight of the product was correct, OT+ and/or OT- (Output of packages which are OK, OT+, OT-, OK and OT+, OK and OT-)
- Printing the statistics when the weight of the product was OT- or OT+. (Output of packages which are OT+ and OT-)
- Printout the statistics of all weighing operations (Output of packages which are OK, OT+ or OT-)

### Examples of weighing ticket at the end of a sorting cycle

ARPEGE MASTER-K			
38 Avenue des Freres Montgolfier BP 186 69686 CHASSIEU Cedex			
Date:19/07/2012		Heure:16:16:53	
NUMERO DE TICKET:000001			
LOT No	:000001		
OPERATEUR No	:000019		
PRODUIT	:000001 SAC DE SEIGLE		
TARE	MINI	MAXI	
0.00 kg	24.80 kg	25.25 kg	
No DSD	Date	Heure	NET
000001	19/07/12	16:17:02	24.95 kg G
000002	19/07/12	16:17:05	24.97 kg G
000003	19/07/12	16:17:09	24.95 kg G
000004	19/07/12	16:17:12	24.94 kg G
000005	19/07/12	16:17:15	24.98 kg G
000006	19/07/12	16:17:17	24.94 kg G
BONS	Nb: 6	NET: 149.73 kg	
HT -	Nb: 0	NET: 0.00 kg	
HT +	Nb: 0	NET: 0.00 kg	
Date:19/07/2012		Heure:16:17:19	
Tel:04-72-22-92-22 / Fax:04-78-90-84-16			
www.masterk.com / marketing@masterk.com			

*Ce ticket est toujours imprimé au format 40 colonnes.*

ARPEGE MASTER-K			
38 Avenue des Freres Montgolfier BP 186 69686 CHASSIEU Cedex			
Date:19/07/2012		Heure:16:17:19	
NUMERO DE TICKET:000001			
LOT No	:000001		
OPERATEUR No	:000019		
PRODUIT	:000001 SAC DE SEIGLE		
TARE	MINI	MAXI	
0.00 kg	24.80 kg	25.25 kg	
BONS	100.0 %	6	149.73 kg
		Moy :	24.955 kg
		EType:	0.015 kg
HT -	0.0 %	0	0.00 kg
		Moy :	0.000 kg
		EType:	0.000 kg
HT +	0.0 %	0	0.00 kg
		Moy :	0.000 kg
		EType:	0.000 kg
TOUS	100.0 %	3	149.73 kg
		Moy :	24.955 kg
		EType:	0.015 kg
Tel:04-72-22-92-22 / Fax:04-78-90-84-16			
www.masterk.com / marketing@masterk.com			

## Totals

Two types of totals:

- By batch with statistics for the batch
- Detailed by weight with statistics

ARPEGE MASTER-K			
38 Avenue des Freres Montgolfier BP 186 69686 CHASSIEU Cedex			
LOT No		: 000001	
STATISTIQUES DU TRI	Nb	Total NET	Moyenne
BONS 100.0 %	6	149.73 kg	24.955 kg
HT - 0.0 %	0	0.00 kg	0.000 kg
HT + 0.0 %	0	0.00 kg	0.000 kg
TOUS 100.0 %	6	149.73 kg	24.955 kg
Tel:04-72-22-92-22 / Fax:04-78-90-84-16			
www.masterk.com / marketing@masterk.com			

ARPEGE MASTER-K			
38 Avenue des Freres Montgolfier BP 186 69686 CHASSIEU Cedex			
LOT No		: 000001	
No DSD	Date	Heure	OPERAT
000001	19/07/12	16:17:02	000019
000002	19/07/12	16:17:05	000019
000003	19/07/12	16:17:09	000019
000004	19/07/12	16:17:12	000019
000005	19/07/12	16:17:15	000019
000006	19/07/12	16:17:17	000019
Tel:04-72-22-92-22 / Fax:04-78-90-84-16			
www.masterk.com / marketing@masterk.com			
ARPEGE MASTER-K			
38 Avenue des Freres Montgolfier BP 186 69686 CHASSIEU Cedex			
LOT No		: 000001	
STATISTIQUES DU TRI	Nb	Total NET	Moyenne
BONS 100.0 %	6	149.73 kg	24.955 kg
HT - 0.0 %	0	0.00 kg	0.000 kg
HT + 0.0 %	0	0.00 kg	0.000 kg
TOUS 100.0 %	6	149.73 kg	24.955 kg
Tel:04-72-22-92-22 / Fax:04-78-90-84-16			
www.masterk.com / marketing@masterk.com			

*Exemple d'impression avec le détail des pesées, ce ticket est toujours imprimé au format 89 colonnes.*

## Data export

The data may be exported on USB flash drive - or downloaded by PC via serial link - to be used on spreadsheet software (Excel® for example).

**PE000001.TXT ; Détails des pesées pour le lot n°000001.**

000001	19/07/2012	16:17:02	000001	000019	000001	000.00	024.80	025.25	024.95	G
000002	19/07/2012	16:17:05	000001	000019	000001	000.00	024.80	025.25	024.97	G
000003	19/07/2012	16:17:09	000001	000019	000001	000.00	024.80	025.25	024.95	G
000004	19/07/2012	16:17:12	000001	000019	000001	000.00	024.80	025.25	024.94	G
000005	19/07/2012	16:17:15	000001	000019	000001	000.00	024.80	025.25	024.98	G
000006	19/07/2012	16:17:17	000001	000019	000001	000.00	024.80	025.25	024.94	G

↑                    ↑                    ↑                    ↑                    ↑                    ↑                    ↑                    ↑                    ↑                    ↑

No DSD      Date                    Heure                    LOT No    OPERATEUR No    Code Pro.    Tare                    Min kg                    Max kg                    Net kg                    Etat pesée

## Connection and peripherals

### Direct command of extraction devices (I/O option)

1 option board from:

- 4I/4O option board with or without 0/10V or 4/20mA analogue output option
- 8I/24O option board
- 16I/24O option board
- 8I/8O option board
- ANYBUS® type S Profibus-DP® or DeviceNet® field bus board
- ANYBUS® type S Ethernet Modbus TCP field bus board

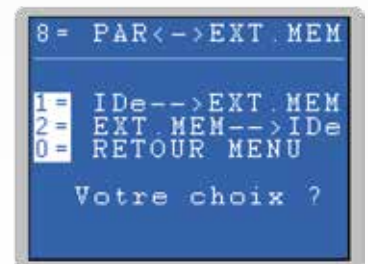
### Communication port:

- 1 LPT for printer
- 1 COM1 RS232 or RS485 2-wire
- 1 COM2 passive current loop (CL)  
*or optionally, one of the following boards:*
  - Active current loop (CL)
  - Serial RS232
  - Serial RS485 (2-wire or 4-wire)
  - Ethernet Xport Modbus TCP board
  - Analogue output 0-10V
  - Analogue output 4-20 mA
- 1 Digital Bus CAN (Arpege Master K only)

### Peripheral device management:

- Printer
- Remote display
- PC/PLC with MODBUS/JBUS connection or, optionally, with fieldbus connection
- PC with RS 232 or modem link
- USB flash drive (option)

**Download, transfer of settings, dosing data to and from a PC, USB flash drive**



## ARPEGE MASTERK

Bâtiment n°6 - 15, rue du Dauphiné  
CS 40216 - 69808 St PRIEST - FRANCE  
Tél : +33 (0)4 72 22 92 22  
Fax : +33 (0)4 72 22 93 45  
marketing@masterk.com

Our product factsheets  
are available for download  
at our website  
[www.masterk.com](http://www.masterk.com)

Your contact information