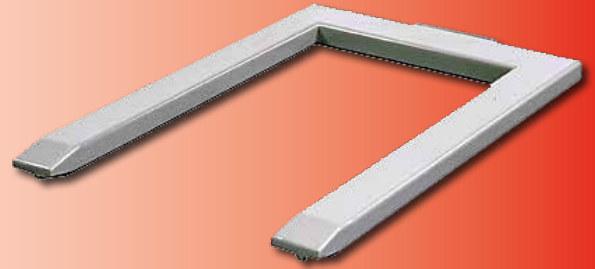




Weigh-Pallet



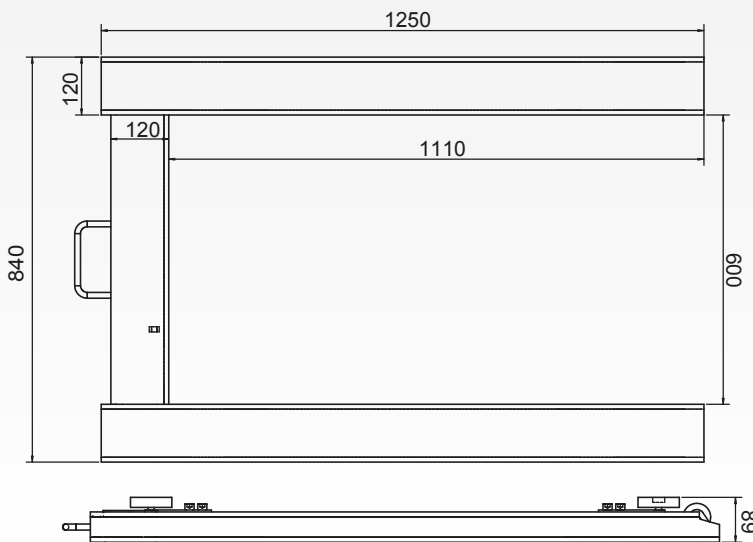
Description

Rapid solution, reliable and movable for pallet weight in all business sectors.
Connectible to all our range indicators.

Characteristics

- ▶ U-shaped weight-pallet comprises 4 stain steel captors nicked IP67, assembled on 4 independent feet
- ▶ Available in stain steel and stainless steel versions
- ▶ To be installed in floor plan, equipped with transport handle and 2 casters for an easier moving
- ▶ Delivered with 5 m cable

Plan/Size



| Version | Weight / Level |
|-------------------------------------|------------------|
| Painted steel or Stainless steel | 600 kg / 200 g |
| | 1 500 kg / 500 g |
| | 3 000 kg / 1 kg |

Dimensions in mm

Options/Accessories

- ▶ Atex
- ▶ Covering sheet metal removable

ARPEGE MASTERK

Bâtiment n°6 - 15, rue du Dauphiné
CS 40216 - 69808 St PRIEST - FRANCE
Tél : +33 (0)4 72 22 92 22
Fax : +33 (0)4 72 22 93 45
marketing@masterk.com

Our product factsheets
are available for download
at our website
www.masterk.com

Company Registration: 971 506 480 RCS LYON
SIC registration code: APE 2829A French VAT: FR 28 971 506 480

Your contact information